

New and improved BASWaphon System.



**CERTIFIED
APPLICATOR**

Phone: 631.953.6990

Fax: 631.953.6991

www.idthermal.com

www.islanddiversified.com

1191 Scott Avenue Calverton, New York 11933



BLUE HILL AT STONE BARNES - POCANTICO HILLS, NY

THE *PERFECTED* ACOUSTICAL ENVIRONMENT

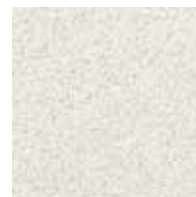
BASWaphon delivers a premium acoustical experience by creating environments where sound is highly intelligible. Installed in courtrooms, casinos, corporate, university, government and museum spaces, BASWaphon, the original seamless surface, compliments the architect's vision.

The BASWA acoustic Team continuously works to improve the BASWaphon Seamless Sound Absorbing Plaster System in order to offer a premium, cost effective product. New Pre-Sanded Rigid Supporting Panels and new "Trowel Friendly" Top Coat ensure the smoothest, highest quality surface available in the industry.

AVAILABLE IN 3 STANDARD FINISHES



Classic Finish
Smoothest, finest grained, troweled finish.



Resilient Finish
Washable, mold and mildew resistant, troweled smooth Base 407 finish.



Frosted Finish
Washable, mold and mildew resistant, maintenance friendly, light sand finish.

CUSTOM FINISHES

Custom Finishes are available upon request. Finishes can replicate "Old World" plaster aesthetics.

THE BASWaphon ADVANTAGE

- **Seamless.** Up to 5,000 square feet without a control joint.
- **Curves, Domes or Vaults.** Can be applied to flat, curved, compound curved, domed or vaulted surfaces.
- **Highest Sound Absorption.** Noise Reduction Coefficient (NRC) as high as 1.00.
- **Tinted to Match any Color.** No adverse effects on acoustical performance.
- **Not Water Soluble.** Resilient and Frosted Finishes are mold, moisture and mildew resistant.
- **Humid Environments.** Can be used in spas and natatoriums.
- **Light Weight.** Approximately 1lb per square foot.
- **The Original.** BASWaphon is the original, most specified seamless, sound absorbing plaster system.



GRAM AUDITORIUM - GRAND RAPIDS, MI



BROOKS COUNTY COURTHOUSE - FALFURRIAS, TX

- **Reduces Reverberation Time.** High NRC Ratings drastically improve intelligibility.
- **New Pre-Coated Pre-Sanded Panel.** Ensures smoothest possible surface.
- **New "Trowel Friendly" Top Coat.** Guarantees easy installation.
- **LEED Contribution Points in 9 Categories.** 86% recycled materials, MSDS friendly, no VOC's, high light reflectance and a high R-value. Member of USGBC.
- **Warranties.** Five year warranty available.
- **Field Applied.** Installation takes 2 to 3 days; no field measurements, no shop drawings.
- **In Stock.** Immediate delivery and installation.
- **Certified Local Installers.** Over 90 Local Independent Contractors trained on-site by BASWA acoustic.
- **No Telegraphing Seams.** Beveled edge of Pre-Sanded Panel requires no taping.
- **Repairable.** Common drywall repair techniques are used to fill in a damaged area.
- **20 Years of Installations.** No product failures. Finish is easily renewable. Time Tested.
- **Rigid Supporting Panel.** Pre-Sanded Panel will not separate or compress.
- **No Drywall Blocking.** Not required for light fixtures, diffusers or terminations.
- **Access Panels.** Trimless access panels up to 8'x 8' available with BASWaphon Finish on the face.
- **Made in USA.** Only seamless, sound absorbing plaster system with components made in the United States.

HOW BASWaphon WORKS

High frequency sound absorption is accomplished by allowing sound wave energy to pass through the micro pores in the finished surface, thereafter, dissipating it into heat energy in the mineral wool.

Low frequency sound absorption is accomplished when sound wave energy hits the finished surface, causing the "skin" to vibrate in a diaphragmatic action against the mineral wool backing, creating a "spring" action. Again, this transforms and dissipates sound energy into heat energy.

BASWaphon SYSTEMS AND NRC RATINGS

The BASWaphon Seamless Sound Absorbing Plaster Finish System is available in 3 system thicknesses.

NRC Ratings
30mm – 0.75 - 0.80
40mm – 0.85
70mm – 0.90 - 1.00

NRC Ratings vary with the Finish. Coefficient testing is calculated following ASTM C423 Sound Absorption Test guidelines for type "A" and "E" Mountings. Certified Test Data reflects actual installation conditions and is supplied by Independent Third Party.

BASWaphon STC RATINGS

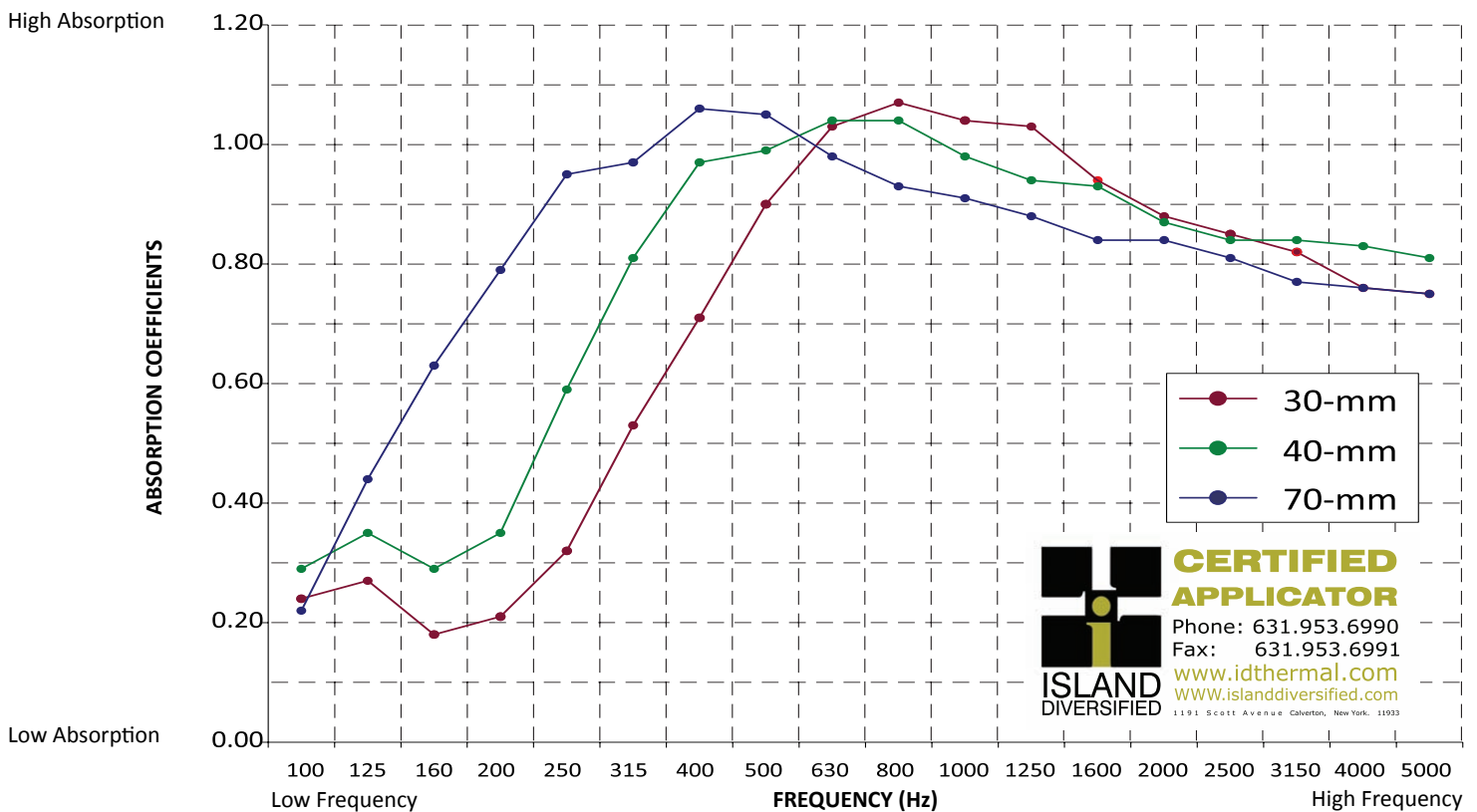
BASWaphon provides an additional 5 to 7 points to a STC Rating. Test Data is available upon request.

SPECIALTY FINISHES WITHOUT SUPPORTING PANEL

Test data for custom applications of BASWaphon Pre-Fill, Base 407 and Top Coat over a stable substrate is available upon request.

BASWaphon Acoustical Test Data							
BASWaphon System	Absorption Coefficients (Hz)						NRC Ratings
	125	250	500	1000	2000	4000	
30mm Classic Finish	0.32	0.34	0.86	0.98	0.89	0.72	0.75
40mm Classic Finish	0.31	0.63	0.98	0.90	0.87	0.76	0.85
70mm Classic Finish	0.45	0.92	0.99	0.84	0.84	0.70	0.90
30mm Frosted Finish	0.32	0.32	0.93	1.02	0.92	0.80	0.80
40mm Frosted Finish	0.26	0.49	1.04	1.04	0.91	0.88	0.85
70mm Frosted Finish	0.39	0.98	1.07	0.95	0.90	0.75	1.00
30mm Resilient Finish	0.24	0.30	0.92	1.01	0.90	0.80	0.80
40mm Resilient Finish	0.34	0.52	1.00	1.00	0.88	0.84	0.85
70mm Resilient Finish	0.44	0.95	1.05	0.91	0.84	0.76	0.95

SOUND ABSORPTION COEFFICIENTS



CERTIFIED APPLICATOR
 Phone: 631.953.6990
 Fax: 631.953.6991
www.idthermal.com
www.islanddiversified.com
 1191 Scott Avenue, Calverton, New York, 11933





COMPUWARE HEADQUARTERS - DETROIT, MI

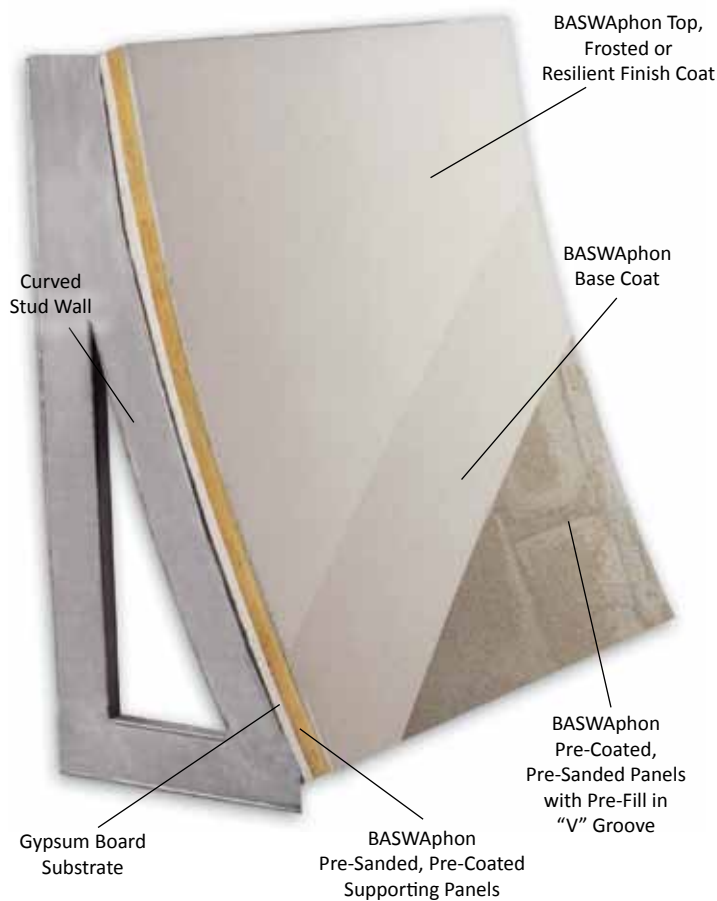



**CERTIFIED
APPLICATOR**
 Phone: 631.953.6990
 Fax: 631.953.6991
www.idthermal.com
www.islanddiversified.com
 1191 Scott Avenue Calverton, New York, 11933

THE CUE AT THE GUTHRIE THEATER - MINNEAPOLIS, MN

APPLICATIONS

- Airports
- Atriums
- Auditoriums
- A/V Rooms
- Ballrooms
- Boardrooms
- Broadcast Studios
- Churches
- Cinemas
- Classrooms
- Concert Halls
- Conference Rooms
- Courtrooms
- Financial Exchanges
- Government Facilities
- Historical Restorations
- Home Theaters
- Hospitals
- Learning Centers
- Libraries
- Lobbies
- Museums
- Music Rehearsal Rooms
- Recording Studios
- Restaurants
- Spas and Natatoriums
- Student Centers
- Universities



LEED CONTRIBUTION CREDITS

BASWaphon Acoustical Finish System may provide Contribution Points in the following LEED Categories:

EA Credit 1	- Optimized Energy Performance
MR Credit 2	- Construction Waste Management
MR Credit 4	- Recycled Content
MR Credit 5	- Regional Materials
IEQ Credit 3.1	- Green Cleaning
IEQ Credit 4	- Low Emitting Materials
IEQ Credit 7.1	- Thermal Comfort
IEQ Credit 8.1/2.4	- Daylight and Views
EQ Credit 9	- Enhanced Acoustical Performance

The system is comprised of 86% recycled content and emits no harmful off-gassing (VOC's).

BASWaphon is MSDS friendly, has high light reflectance and a high R-value.

BASWaphon Top Coat and Base 407 are manufactured near Cleveland, Ohio.

Test Data and LEED submittals are available upon request.

BASWA acoustic's Team has been trained by the Swiss product developer on the proper means to install and guide other applicators.

INSTALLING THE BASWaphon SYSTEM

1. **Pre-Coated, Pre-Sanded, Rigid Supporting Panels** with beveled edges are cut to size on site with a utility knife and adhered with a plaster based adhesive to a stable substrate, such as taped drywall.
2. **BASWaphon Pre-Fill** is troweled into the "V" groove seams formed by the beveled edges of the panels.
3. **Sand** the Pre-Filled seams.
4. **BASWaphon Base Coat** is spray applied, gauged, smoothed with a trowel and allowed to dry.
5. **Sand** the Base Coat.
6. **Classic Top Coat, Frosted or Resilience Finish Coat** is spray applied, gauged, smoothed with a trowel and allowed to dry.

CLASS A FIRE RATED

BASWaphon is a Class A fire rated interior finish meeting all the requirements of UL E-84.



CERTIFIED APPLICATOR
 Phone: 631.953.6990
 Fax: 631.953.6991
www.idthermal.com
www.islanddiversified.com
 1191 Scott Avenue Calverton, New York. 11933

MGM GRAND FIAMMA TRATTORIA RESTAURANT - LAS VEGAS, NV