

K-13[®]

spray-on systems

Compatible, versatile and economical multifunction insulation system

CSI 07218

(800) 444-1252

The Custom Spray System

K-13 is the spray-applied insulation tailored to your specific project requirements for insulation (R value), noise reduction (NRC), color, durability, condensation control, texture, and aesthetics. In addition, it usually provides these features at lower installed prices than many common systems such as rigid board and batt insulations, sprayed plasters, and acoustical ceilings.

It is applied to virtually any properly prepared surface configuration of wood, steel, concrete, glass and other common construction surfaces. K-13 can be sprayed up to five inches thick overhead in one application without mechanical support. Additionally, K-13 serves as the exposed finish requiring no additional materials.

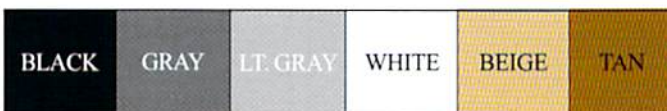
A Total System: Fiber, Binder, Application

K-13 is a total system of recycled natural fibers, chemical treatment, binding system and application method. The K-13 system begins with specially prepared cellulose fibers which are chemically treated to add resistance to fire, mold and mildew. K-13 is produced in a strict, quality controlled manufacturing process.

K-13 is applied by an international network of licensed applicators through approved fiber machines and nozzles for control of the fiber/binder ratio. During application, the K-13 fibers are combined with a patented adhesive. The finished product is a strong, durable monolithic coating of a predetermined thickness. Some surfaces will require priming prior to being sprayed.

Naturally Tough – Naturally Attractive

With its texture and wide variety of colors, K-13 is especially attractive as a surface finish in new construction as well as renovation projects. Available in six standard colors, K-13 can also be specified in specially matched custom colors.



Color selection will affect the final price

Thermal Performance

K-13 insulates by creating dead air spaces between and within its hollow fibers. Because K-13 fibers are sprayed-in-place, they fill cracks, seams and voids, forming a monolithic coating over the substrate which reduces air infiltration. Unlike prefabricated insulations, K-13 has no voids or compressed areas to reduce thermal efficiency. The result is a more effective in-place product with exceptionally low heat transfer characteristics.

The patented adhesive utilized in the installation of K-13 adheres to virtually all common construction materials including: metal, wood, concrete, urethane, styrofoam and glass. Some surfaces may require pretreatment prior to installing K-13. This unique adhesive provides unequalled strength allowing applications of 3/4 inch to over 5 inches without mechanical support. This capability provides R-values from 3 to over 19.

Condensation Control

For areas such as indoor pools and ice arenas, K-13 aids in condensation control. The proper combination of K-13 and ventilation prevents condensation on metal, concrete and other surfaces. K-13 actually reduces ventilation requirements, saving in both the ventilation equipment investment and operating costs.



This manufacturing facility utilized K-13 for acoustical control and much needed thermal control.



K-13
spray-on systems®

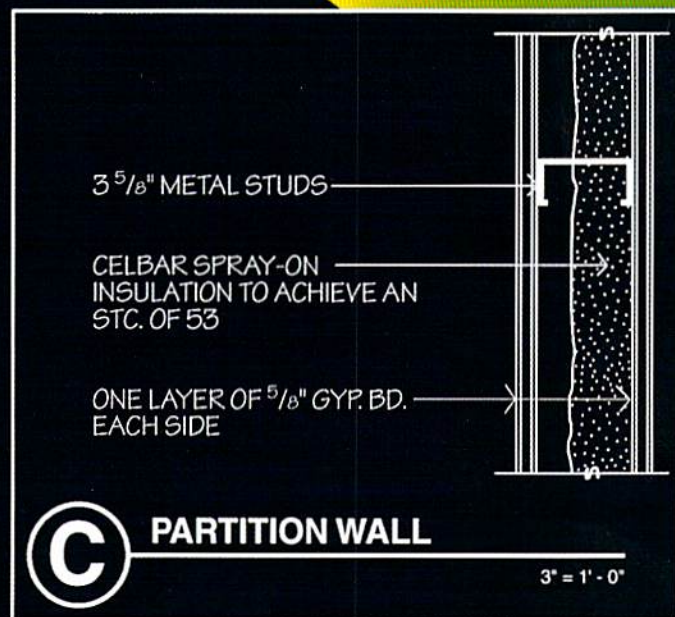
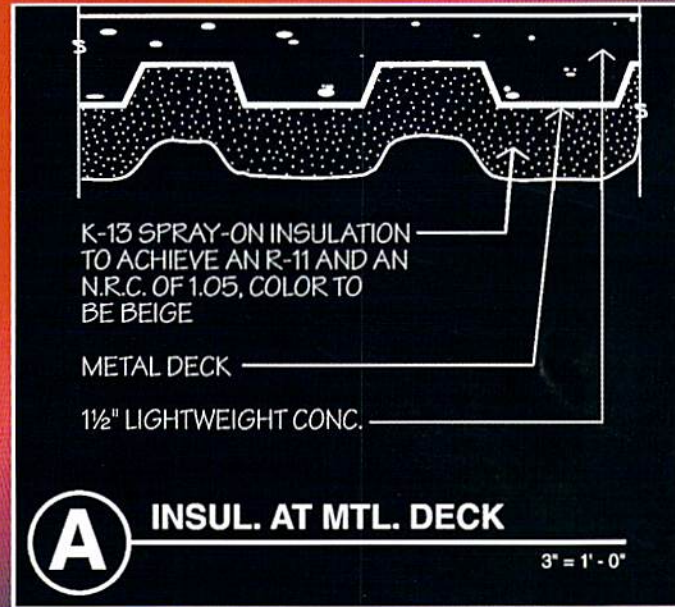
**Thermal &
Acoustic
Insulation**

SonaSpray® "fc"
Acoustical treatment

**Spray-On
Acoustical
Treatment**

celbar
spray-on systems®

**Sound
Transmission
Control**



**CERTIFIED
APPLICATOR**

Phone: 631.953.6990
Fax: 631.953.6991
www.idthermal.com
www.islanddiversified.com
1191 Scott Avenue Calverton, New York, 11933