



## Senerflex Finishes



### PRODUCT BULLETIN 1021095

#### Description

100% acrylic polymer finishes with advanced technology to improve long-term performance and dirt pick-up resistance.

#### Colors & Textures

Available in 126 standard and custom colors in a variety of textures to complement the design freedom of Senergy Wall Systems or to impart the look of stucco on other exterior and interior walls.

#### Packaging

31.7 kg per 19-liter pail  
(70 lbs per 5-gallon pails)

#### Coverages

Coverage rates may vary depending on the coating texture porosity of substrate and application techniques.

#### Belgian Lace Finish:

14.8 m<sup>2</sup> (160 ft<sup>2</sup>) per pail

#### Classic Finish:

13 m<sup>2</sup> (140 ft<sup>2</sup>) per pail

#### Coarse Finish:

8.3 m<sup>2</sup> (90 ft<sup>2</sup>) per pail

#### Fine Finish:

13 m<sup>2</sup> (140 ft<sup>2</sup>) per pail

#### Sahara Finish:

11.1 m<sup>2</sup> (120 ft<sup>2</sup>) per pail

#### Texture Finish:

Coverage varies depending upon application.



**CERTIFIED  
APPLICATOR**

Phone: 631.953.6990

Fax: 631.953.6991

[www.idthermal.com](http://www.idthermal.com)

[www.islanddiversified.com](http://www.islanddiversified.com)

1191 Scott Avenue Calverton, New York. 11933



The Chemical Company

# Senerflex® Finishes



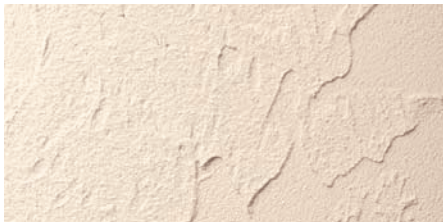
## **Fine**

Factory-mixed, 100% acrylic polymer finish coat. Available in Senergy's standard colors and custom colors. FINE Finish utilizes uniformly-sized aggregates for a uniform, fine texture.



## **Sahara**

Factory-mixed, 100% acrylic polymer finish coat. Available in Senergy's standard colors and custom colors. SAHARA Finish provides a uniform, "pebble" appearance.



## **Texture**

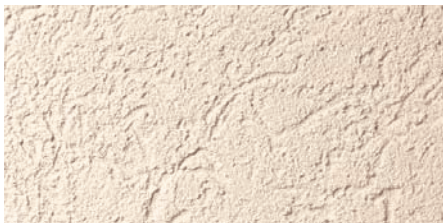
Factory-mixed, 100% acrylic polymer finish coat. Available in Senergy's standard colors and custom colors. TEXTURE Finish can achieve a wide variety of free-formed, textured appearances, including stipple and skip-trowel.

Note: If a "smooth" application is required, multiple coats and skillful application techniques will be required.



## **Belgian Lace**

Factory-mixed, 100% acrylic polymer finish coat. Available in Senergy's standard colors and custom colors. BELGIAN LACE Finish has a fine "worm-holed" appearance which is achieved by the random aggregate sizes in the Finish. The small "worm-holed" look can be circular, random, vertical or horizontal.



## **Classic**

Factory-mixed, 100% acrylic polymer finish coat. Available in Senergy's standard colors and custom colors. CLASSIC Finish has a medium "worm-holed" appearance which is achieved by the random aggregate sizes in the Finish. The "worm-holed" look can be circular, random, vertical or horizontal.



## **Coarse**

Factory-mixed, 100% acrylic polymer finish coat. Available in Senergy's standard colors and custom colors. COARSE Finish has a heavy "worm-holed" appearance which is achieved by the random aggregate sizes in the Finish. The "worm-holed" look can be circular, random, vertical or horizontal.

# Senerflex® Finishes

## Uses

- 1. Provides an aesthetically pleasing surface color and texture for the Senergy® Wall Systems.
- 2. Can also be utilized as a textured Finish for poured concrete or unit masonry, conventional stucco, Senergy Stucco Wall System, Senergy Cement-Board Stucco™ Systems, all Senergy Surfacing Systems, and interior veneer plaster or gypsum wallboard.

## Technical Information

Consult the BASF Wall Systems Technical Services Department for specific recommendations concerning all other applications. Consult the Senergy website, [www.senergy.cc](http://www.senergy.cc), for additional information about products and systems and for updated literature.

## Mixing

- 1. Mix the contents of the factory-prepared Finish pail with a low speed drill and paddle mixer until thoroughly blended.
- 2. A small amount of clean, potable water may be added to adjust workability.
- 3. Additives are not permitted.
- 4. Close container when not in use.
- 5. Clean tools with soap and water immediately after use.

## Surface Preparation

Substrates must be clean, dry, sound and free of loose material, releasing agents, paint, efflorescence, contaminants and other coatings. Fill cracks or voids with an appropriate, compatible material to provide a solid substrate prior to application of SENERFLEX FINISH. Ensure patching material is dry prior to application of SENERFLEX FINISH.

**Note: The primers are more for color uniformity, not for adhesion assistance.**

## Concrete:

- 1. Allow concrete to cure prior to application of SENERFLEX FINISH.
- 2. Remove all projections, form lines and release agents.
- 3. When needed, apply Senergy TINTED PRIMER to cured concrete with a sprayer, 10 mm (3/8") nap roller or good-quality latex paint brush at a rate of approximately 3.6–6.1 m<sup>2</sup> per liter (150–250 ft<sup>2</sup> per gallon). TINTED PRIMER shall be dry to the touch before proceeding to the SENERFLEX FINISH application.

Features	Benefits
100% acrylic polymer-based chemistry	Provides long-term durability and weather resistance
Integral color	Reduces maintenance and recoating
Weather resistant	Repels water and resists wind-driven rain
Seals existing, non-moving hairline cracks	Protects
Breathable	Does not blister, peel or flake
Abrasion resistant	Durable
Factory mixed	Ready to use, no additives to mix
Water based	Safe, non-toxic, clean up easily with soap and water
High UV resistance	Resist fading



# Senerflex® Finishes

## Unit masonry:

1. Allow unit masonry to cure prior to application of SENERFLEX FINISH.
2. Remove all loose mortar and projections.
3. When needed, apply a leveling coat of STANDARD BASE COAT or ALPHA GENIE BASE COAT to provide a smooth surface and minimize the likelihood of mortar joint read through prior to application of SENERFLEX FINISH.

## Stucco:

1. Allow stucco to cure before applying SENERFLEX FINISH.
2. When needed, apply Senergy STUCCO PRIME to cured stucco with a sprayer, 10 mm (3/8") nap roller or good-quality latex paint brush at a rate of approximately 3.6–6.1 m<sup>2</sup> per liter (150–250 ft<sup>2</sup> per gallon). STUCCO PRIME shall be dry to the touch before proceeding to the SENERFLEX FINISH application.

## Application

1. Substrate shall be dry, clean, sound and free of releasing agents, paint or other residue, contaminates or coatings. Verify substrate is flat, free of fins or planar irregularities greater than 6.4 mm in 3 m (1/4" in 10').
2. Apply Finish directly to the Senergy Base Coat/Reinforcing Mesh with a clean, stainless steel trowel.  
**Note: In order to minimize the possibility of Base Coat read-through with color #330 Maxi-White in CLASSIC and BELGIAN LACE, we recommend the use of Tinted Primer. Base Coat read-through with CLASSIC or BELGIAN LACE Finish in Maxi-White is very applicator dependent.**
3. Apply and level Finish during the same operation to minimum obtainable thickness consistent with uniform coverage.
4. Maintain a wet edge on Finish by applying and texturing continually over the wall surface.
5. Work Finish to corners, joints or other natural breaks and do not allow material to set up within an uninterrupted wall area.
6. Float Finish to achieve final texture.

## Limitations

1. Does not bridge moving cracks.
2. Must be stored, applied and protected at least 24 hours after installation and until dry at 4°C (40°F) or more. Protect from extreme heat and direct sunlight.
3. Protect Senergy materials during transportation and installation to avoid physical damage.
4. Do not apply Senergy materials to frozen surfaces.
5. If using a thicker application of TEXTURE Finish, a longer drying period will be required.
6. Appearance of CLASSIC, BELGIAN LACE, and COARSE might vary if floated by different mechanics.
7. Shelf life is two years when unopened and stored as directed.
8. **Select Finish Coat color with a light reflective value (LRV) of 20% or higher. The use of dark colors (LRV less than 20%) is not recommended with EIFS that incorporate expanded polystyrene (EPS). EPS has a sustained service temperature limitation of approximately 160°F (71°C).**



# Senerflex® Finishes

## Technical Data

Test	Result
<b>Fire Tests:</b> <b>UL 723/ASTM E84</b> Surface Burning Characteristics	Flame Spread < 25 Smoke Developed < 450
<b>Physical Tests:</b> <b>ASTM E96 Method B</b> Water Vapor Transmission	CLASSIC Finish with STANDARD BASE COAT/ FLEXGUARD 4 & HI-IMPACT 20: 1.7 Perms CLASSIC Finish with NC-II BASE/ FLEXGUARD 4: 7.3 Perms SAHARA Finish with STANDARD BASE COAT/ FLEXGUARD 4: 15.1 Perms ASAP/CLASSIC Finish with STANDARD BASE COAT/ FLEXGUARD 4: 17 Perms CLASSIC Finish with STANDARD BASE COAT/ FLEXGUARD 4: 19 Perms CLASSIC Finish with ALPHA DRY BASE COAT/ FLEXGUARD 4: 22.4 Perms
<b>ASTM D2247</b> Water Resistance in 100% R.H.	No deleterious effects after 14 days exposure.
<b>ASTM B117</b> Salt Fog Resistance	No change after 300 hours.
<b>Mil. Std. 810B Method 508</b> Mildew Resistance	No fungus growth after 28 days.
<b>Chemical Resistance</b> (Determined by spot testing the sample surface with turpentine, mineral spirits, and 10% hydrochloric acid for 4 hours).	Turpentine = slight softening Mineral spirits = slight softening 10% Hydrochloric acid = slight softening
<b>ASTM D968</b> Abrasion Resistance	Finish Coat not worn through after 686 liters of falling sand.
<b>ASTM G53</b> Accelerated Weathering	No significant deleterious effects after 7500 hours.
<b>ASTM G23</b> Accelerated Weathering	No significant deleterious effects after 2000 hours.
<b>Acid Rain</b>	Finish Coat was slightly soft upon removal, but recovered upon overnight drying.

## Health and Safety

### Caution

Contains silica, crystalline quartz.

### Risk

May cause eye, skin or respiratory irritation. Ingestion may cause irritation. Contains crystalline silica. NTP and IARC recognize respirable crystalline silica as a suspected human carcinogen. The exposure to crystalline silica during the normal use of this product will be little or none.

### Precautions

Avoid contact with eyes, skin and clothing. Use with adequate ventilation. DO NOT take internally. Wash thoroughly after handling. Use impervious gloves, eye protection and if the TLV is exceeded or if used in a poorly ventilated area, use NIOSH/MSHA approved respiratory protection in accordance with Federal, state and local requirements. Keep container closed when not in use. All label warnings must be observed until container is commercially cleaned or reconditioned.

### First Aid

1. For eye contact, flush thoroughly with water for at least 15 minutes. SEEK MEDICAL ATTENTION.
2. For skin contact, wash affected areas with soap and water. If irritation persists, SEEK MEDICAL ATTENTION. Remove and wash contaminated clothing.
3. If ingested, do not induce vomiting medical advice. If conscious, drink plenty of water. If a person feels unwell or symptoms of skin irritation appear, consult a physician. If a person vomits, place him/her in the recovery position. Never give anything by mouth to an unconscious person.
4. If inhaled, remove victim from exposure. If difficulty with breathing, administer oxygen. If breathing has stopped administer artificial respiration, preferably mouth-to-mouth. SEEK MEDICAL ATTENTION.

**Read Material Safety Data Sheet before using this product.**

### Proposition 65

This product contains materials listed by the state of California as known to cause cancer, birth defects or other reproductive harm.

### VOC Content

26–37 g/l, or 0.22–0.31 lbs/gal less water and exempt solvents.

**For medical emergencies only call chemtrec at (800) 424-9300.**

## Residential Policy

On one and two-family residential framed construction, BASF Wall Systems requires that the wall system selected be one that includes provisions for moisture drainage. The choices include Senturion® line of water managed EIFS, commercial Senerflex® Wall Systems integrating moisture management features, Senergy Stucco Wall System, and Senergy Cement-Board Stucco™ Systems. Senergy Exterior Surfacing Systems for insulating concrete forms are also acceptable. There are no exceptions to this policy. Under no circumstances will BASF Wall Systems warrant the use of any other system on this type of construction without expressed written authorization from BASF Wall Systems [Residential construction using EIFS on masonry (CMU) or poured concrete does not require the additional water management provisions described above.]

See the Senergy *Residential Policy Bulletin* for a more detailed discussion of this topic. Consult BASF Wall Systems Technical Services Department for specific recommendations concerning all other applications. Consult the Senergy web-site, [www.senergy.cc](http://www.senergy.cc) for additional information about products and systems and for updated literature.

## Disclaimer

This information and all further technical advice are based on BASF's present knowledge and experience. However, BASF assumes no liability for providing such information and advice including the extent to which such information and advice may relate to existing third party intellectual property rights, especially patent rights. In particular, BASF disclaims all CONDITIONS AND WARRANTIES, WHETHER EXPRESS OR IMPLIED, INCLUDING THE IMPLIED WARRANTIES OF FITNESS FOR A PARTICULAR PURPOSE OR MERCHANTABILITY. BASF SHALL NOT BE RESPONSIBLE FOR CONSEQUENTIAL, INDIRECT OR INCIDENTAL DAMAGES (INCLUDING LOSS OF PROFITS) OF ANY KIND. BASF reserves the right to make any changes according to technological progress or further developments. It is the customer's responsibility and obligation to carefully inspect and test any incoming goods. Performance of the product(s) described herein should be verified by testing and carried out only by qualified experts. It is the sole responsibility of the customer to carry out and arrange for any such testing. Reference to trade names used by other companies is neither a recommendation, nor an endorsement of any product and does not imply that similar products could not be used.

## BASF Wall Systems

3550 St. Johns Bluff Road South

Jacksonville, FL 32224-2614

Phone 800 • 221 • 9255

Fax 904 • 996 • 6300

[www.senergy.cc](http://www.senergy.cc)