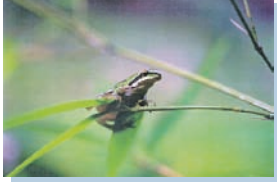




Sonoglass® Acoustic Treatment and LEED



Throughout the Construction Industry and society as a whole there is a growing emphasis on the overall LEED rating of a project. *Sonoglass Spray Applied Acoustic Treatment* can contribute in the following ways.

LEED Category Credit Version 2.2	LEED Points Available	Points Contributed
MR Credit 5.1 and 5.2 Regional Materials	1 - 2 points dependant on all materials being manufactured regionally within 500 miles of the project	Sonoglass is manufactured in Albion, MI. Location of the project will determine the points applicable. 1 - 2 points
ID Credit 1-1.4 Innovation & Design Process	1 - 4 points dependant on the effectiveness and innovation of the design	Sonoglass can contribute in a variety of ways. For potential credits as they relate to project, please contact our office.
EQ Credit 4.2 Low Emitting materials	1 point	Sonoglass contains 1.74g/l (undiluted) of VOC. 1 point contributed
MR Credit 4.1 and 4.2	1 - 2 points	Sonoglass contains 30% post consumer recycled material & up to 17% post industrial recycled material. 2 points contributed
MR Credit 2.1 Construction Waste Management	1 point	The ability to obtain this point is dependant on the waste management practices at the project site. 1 point contributed
EA Credit 1: Optimize Energy Performance	1 - 10 points dependant of percent reduction in energy based on ASHRAE/IESNA Standard 90.1-1999 Section 11	Fiberglass naturally reduces the energy needs of a building project. 1 - 10 points possible.
MR Credit 6:	1 point	Sand, the main ingredient in fiberglass, is considered a rapidly renewable resource by the EPA



Monoglass® Incorporated
 922-1200 West 73rd Avenue,
 Vancouver, BC Canada V6P 6G5
 Tel: 604-261-7712 / 888-777-2966
 www.monoglass.com sales@mo



**CERTIFIED
 APPLICATOR**
 Phone: 631.953.6990
 Fax: 631.953.6991
www.idthermal.com
www.islanddiversified.com
1191 Scott Avenue Calverton, New York, 11933

Manufacturers of Monoglass Spray-On Insulation - Quality insulation products for 30 years